

*Golden Leaf  
Automotive*

**MERCURY  
COUGAR**

**2025**



# Mercury Index

## A

Accelerator Assembly: 37  
A/C Vent Register: 15  
Air Vent Assembly: 4  
“A” Pillar Panels: 20  
Apron Assembly: 9  
Ash Tray: 15

## B

Back-Up Lamp Assembly: 31  
Back-Up Lights Lens & Gasket: 32  
Battery Tray: 4  
Billet Hood Hinge: 12  
Brake Pedal Assembly: 35  
Brake Pedal Pad: 36  
Brake Pedal Support: 35  
Brake Pedal Support-to-Dash Bracket: 35  
Brake Pedal Trim: 36, 37  
Bumper Brackets: 1  
Bumper Filler: 1, 2  
Bumper Mount Bracket: 18  
Bumpers: 1  
Bumpers & Components: 1  
Bumper Splash Shields: 1

## C

Carpet: 40  
Complete Floor Pan: 17  
Complete Vent Window Assembly: 33  
Control Arms: 5, 6  
Convertible Header Molding: 30  
Convertible Top Frame: 20  
Coolant Filter: 5  
Cowl Grille Assembly: 14  
Cowl & Pillar Panels: 13, 14, 15  
Crossmember: 16

## D

Dash Ash Tray w/Cigarette Lighter: 15  
Dash Panel & Components: 15  
Decals: 40  
Disc Brake Pedal Pad: 36  
Door Glass Channel: 34  
Door Glass Kit: 34  
Door Handles & Relays: 22  
Door Hardware & Accessories: 21, 22, 23  
Door Hinge Bushing: 21  
Door Hinge Lower: 21  
Door Hinge Pin: 21  
Door Hinge Upper: 21  
Door Latch: 22  
Door Latch Control Rod: 22  
Door Lock Knob: 21

Door Shell: 21  
Door Sill Scuff Plates: 37  
Door Striker Set: 22  
Door Window Frame Kit: 34  
Door Window Guide: 34  
Door / Window Seals: 33  
Drip Rail Moldings: 30  
Drum Brake Pedal Pad: 36

## E

Emblems: 35  
Engine Compartment: 4  
Export & Firewall/ Tower Braces: 7  
Exterior Door Handles: 23  
Exterior Electrical & Components: 31, 32  
Exterior Mirrors: 29  
Eyebrow Molding: 31

## F

Fender Apron: 10  
Fender Emblem: 35  
Fender Extension: 6  
Fenders: 6  
Firewalls: 13  
Firewall to Floor Pan Supports: 15  
Firewall to Tower Brace: 7  
Floor Pan: 17  
Floor Pan Front Section: 16  
Floor Pan Plug: 18  
Floor Pan Rear Section: 16  
Floor Pans & Components: 15, 16, 17  
Frame Rail & Extensions: 20  
Front Apron Assembly: 8, 9  
Front Fender Apron: 10  
Front Floor Pan Support: 16  
Front High-Back Seat Frame: 39  
Front / Rear Side Marker Bezels: 32  
Front Roof Brace: 20  
Front Seat Bottom Spring: 39  
Front Seat Frame Assembly: 39  
Front Side Marker Assembly: 32  
Front Side Marker Lens Assembly: 32  
Fuel Filler Hose: 28  
Fuel Filler Necks & Caps: 28  
Fuel Sending Units: 27, 28  
Fuel Tanks: 26, 27  
Fuel Tank Straps: 28  
Full Floor Pan: 16

## G

Glass, Weatherstrip & Seals: 32, 33, 34, 35  
Grille Components: 11

## H

Headlight Switch: 41  
Headliner Molding: 30  
Headrest: 39  
Headrest Guide and Retainer: 40  
Heater Blower Motor: 4  
Heater Box: 5  
Heater Resistor: 4  
Heating/Cooling Components: 4, 5  
Hood: 11  
Hood Catch / Grille Support: 12  
Hood Hinge: 12  
Hood Inner Panel: 11  
Hood Latch: 12  
Hood Latch Support: 12  
Hood Moldings: 29  
Hoods & Components: 11, 12  
Horn Set: 41

## I

Ignition Switch: 41  
Inner Pillar / Kick Panel: 14  
Interior Door Handle: 23  
Interior Electrical: 41

## L

License Plate Lamp: 32  
Lower Control Arm: 5, 6  
Lower Control Arm Reinforcement: 5  
Lower Cowl Panel: 14  
Lower Steering Column Cover: 15

## M

Mirror Gasket Kit: 29  
Mirrors & Brackets, Interior: 37  
Mirrors, Exterior: 29  
Monte Carlo Bars: 7

## O

Outer Pillar Panel: 13

## P

Parking Brake Assys., Cables & Handles: 35, 36  
Parking Brake Pedal Pad: 36  
Parking Brake Release: 36  
Parking Lamp Assembly: 32  
Parking Lamp Lenses: 32  
Pedal & Shifter Components: 35, 36, 37  
Pedals & Trim (Accelerator, Brake, Clutch): 35  
Pillar/Kick Panel: 13, 14  
Pillars A & B: 20



## Q

Quarter Extension: 24  
Quarter Glass Seal: 32  
Quarter Panels & Components: 24  
Quarter to Bumper Splash Shields: 24  
Quarter Window Body Seals: 33

## R

Radiators: 3, 4  
Radiator Supports & Brackets: 2, 3  
Radiator Support to Hood Bumpers: 12  
Rear Apron Extension: 10  
Rear Deck Filler Panels: 25  
Rear Fender Apron: 10  
Rear Marker Lens: 32  
Rear Quarter Panel Bracket: 24  
Rear Shackle Kit: 5  
Rear Shock Mount: 19  
Rear Side Marker Bezels: 32  
Rear Side Marker Lens Assembly: 32  
Rear Torque Box Top Plates: 8  
Rear View Mirrors & Sun Visor Arms:  
37  
Rear Window Moldings: 30  
Rocker Panel Moldings: 30  
Rocker Panels: 19  
Roof Inner Brace: 19  
Roof Outer Skin Panel: 20  
Roof Panel: 19, 20  
Roof Rail Seals: 33

## S

Seat Back Frame: 38  
Seat Back Spring: 38  
Seat Bottom: 39  
Seat Frames & Springs: 38, 39  
Seat Headrest & Guide/Retainer: 38  
Seat Platforms: 16  
Seats & Components: 38, 39, 40  
Seat Track Assembly: 40  
Shock Mount, Rear: 19  
Shock Tower Cap: 9  
Shock Tower Replacement: 10  
Shock Towers & Components: 8, 9, 10  
Side Marker Bezels: 32  
Side Markers, Housings & Lenses: 32  
Spring Saddle: 5  
Spring Seat: 5  
Spring Shackle Kit: 5  
Steering Column Cover: 15  
Sun Visor Arm: 37  
Suspension & Steering: 5, 6

## T

Tail Lamp Panel & Components: 25, 26  
Tail Lamp Panel Corner: 26  
Throttle Pedal Pad: 37

Throttle Pedal Pad Trim: 37  
Torque Boxes: 7, 8  
Torque Box Gussets: 7  
Transmission Support: 15, 16  
Trunk Floor Complete: 18  
Trunk Floor Drop off: 19  
Trunk Floor Kit: 18  
Trunk Floor Pans & Components: 18, 19  
Trunk Lid & Latch: 25  
Trunk Molding: 31

## U

Upper Control Arm: 5  
Upper Control Arm Shaft Kit: 5  
Upper Cowl Panel: 14  
Upper / Lower Cowl Panel: 15

## V

Valance Panels: 2  
Vent Window Assembly: 33  
Vent Window Frame: 34  
Vent Window Handles: 23  
Vent Window Weatherstrip: 33

## W

Weather Strip Retainer: 32  
Wheelhouses: 24  
Wheel Opening Moldings: 31  
Window Crank: 23  
Window Crank Knob Kit: 23  
Window Glass Runs: 33  
Window Guide: 34  
Window Regulator: 23  
Windshield Glass: 35  
Windshield Mldg. Clips: 30  
Windshield Moldings: 29, 30  
Windshield Wiper Blade & Trans. Arms: 28  
Wiper Motor: 15  
Wiper Motor Arm: 28  
Wiper Motor Transmission Arm: 28

# MERCURY COUGAR

## Bumpers & Components

**3801 COMING SOON!**  
1969 Front Bumper



**3801A COMING SOON!**  
1969 Rear Bumper



**3801B COMING SOON!**  
1969 Front Bumper Bracket, 4 Pcs./Set



**3801C COMING SOON!**  
1969 Rear Bumper Bracket, 2 Pcs./Set



## Bumper Brackets

**M3577 NEW**  
1967-68 Bumper Bracket, Rear,  
RH=LH



**M3578 NEW**  
1969-70 Bumper Bracket, Rear,  
RH=LH



## Bumper Splash Shields

**3848E NEW**  
1967-68 Quarter to Bumper Splash Shields, Rubber, Pair



## Bumper Filler

**3806 NEW**  
1967-68 Front Bumper Filler  
**DYNACORN EXCLUSIVE!**



**3807A NEW**  
1969 Front Bumper Filler  
**DYNACORN EXCLUSIVE!**





## Bumper Filler

**3807B NEW**  
1970 Front Bumper Filler  
**DYNACORN EXCLUSIVE!**



**3819**  
1969-70 Fender to Bumper Filler w/ Screws, Pair  
**DYNACORN EXCLUSIVE!**



## Valance Panels

**3805 NEW**  
1967-68 Front Valance Panel  
**DYNACORN EXCLUSIVE!**



**3854 NEW**  
1967-68 Rear Valance Panel  
**DYNACORN EXCLUSIVE!**



**3807 NEW**  
1969-70 Front Valance  
**DYNACORN EXCLUSIVE!**



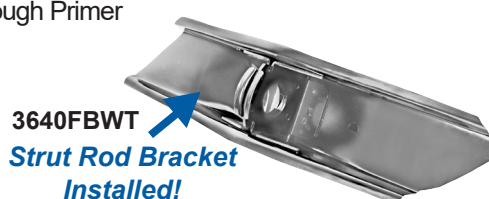
**3855 NEW**  
1969-70 Rear Valance  
**DYNACORN EXCLUSIVE!**



## Radiator Supports & Brackets

**3640FAWT NEW**  
1967-70 Radiator Support-to-Frame Brace, RH,  
Weld Through Primer

**3640FBWT NEW**  
1967-70 Radiator Support-to-Frame Brace, LH,  
Weld Through Primer



**3640F NEW**  
1967-68 Radiator Support, EDP Coating



## Radiator Supports & Brackets

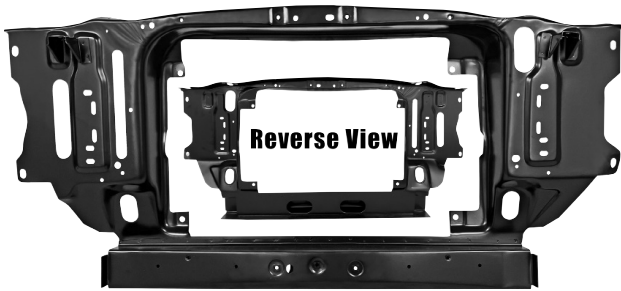
### 3640G **NEW**

1969 Radiator Support, EDP Coating



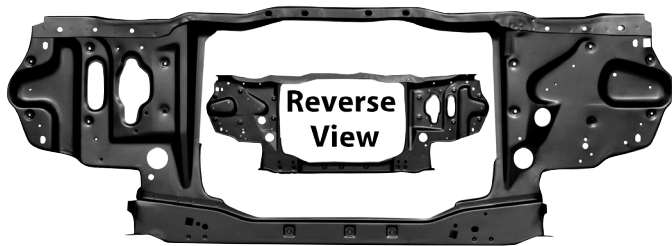
### 3640H **NEW**

1970 Radiator Support



### 3640J **NEW**

1971-73 Radiator Support, EDP Coating



## Radiators

### FM-ER203

1967-69 Radiator Aluminum 2-row, V-8, Flange Mount, (340)



### FM-ER303

1967-69 Radiator Aluminum 3-row, V-8, Flange Mount, (340)



### FM-ER206

1968-69 Radiator Aluminum 2-row, 289 / 302 / 351 w/ AC (338-A2)





## Radiators

### FM-ER307

1967-70 Radiator Aluminum 3-row, V-8, (379-A3)



### FM-ER207

1967-70 Radiator Aluminum 2-row, V-8, (379-A2)



### FM-ER205

1969-70 Radiator Aluminum 2-row, 250 / 302 / 351, (339)



## Engine Compartment

### M3535

1967-68 Battery Tray



## Heating / Cooling Components

### 3626A NEW

1967-68 Air Vent Assembly



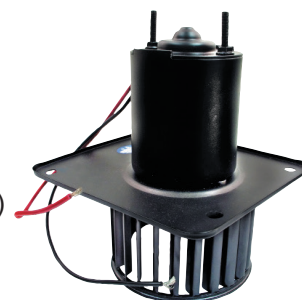
### M33882 NEW

1967-68 Heater Blower Motor, 3 Spd. (After 4/1/65)



### M33883 NEW

1967-68 Heater Blower Motor Assembly, 3 Spd. (After 4/1/65)

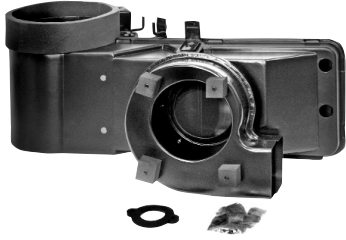


# MERCURY COUGAR

## Heating / Cooling Components

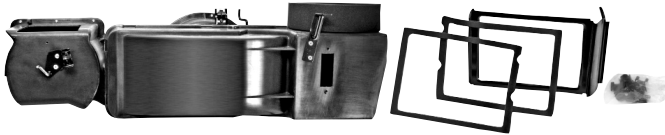
### M3517 **NEW**

1967-68 Heater Box w/ Gasket Kit & Clips



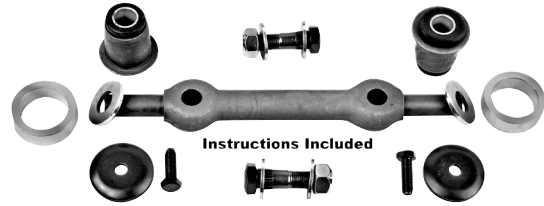
### M3518A **NEW**

1969-70 Heater Box w/ Gasket Kit & Clips, STD ( No A/C )



### 3631JD **NEW**

1967-73 Upper Control Arm Shaft Kit ,  
Rubber Bushing Style Upgrade



### 3631J

1967-73 Upper Control Arm



## Suspension & Steering

### 3631B

1967-70 Spring Shackle Kit



### 3631JL

1967-73 Upper Control Arm  
w/ Upgraded Rubber Bushings,  
Heavy Duty Shaft



### 3631G

1967-73 Spring Seat



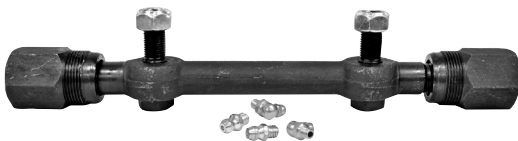
### 3631JA

1967 Lower Control Arm



### 3631JN **NEW**

1967-73 Upper Control Arm Shaft Kit



### 3631JF

1968-72 Lower Control Arm Reinforcement



## Suspension & Steering

### 3632GHD

1968-73 Lower Control Arm, Reinforced Heavy Duty

*Reverse View  
Showing HD  
Reinforcement*



## Fender Extension

### 3818A NEW

1967-68 Fender Extension, RH  
**DYNACORN EXCLUSIVE!**

### 3818B NEW

1967-68 Fender Extension, LH  
**DYNACORN EXCLUSIVE!**



### 3817A COMING SOON!

1969-70 Fender Extension, RH

### 3817B COMING SOON!

1969-70 Fender Extension, LH



## Fenders

### 3810 NEW

1967-68 Fender, RH  
**DYNACORN EXCLUSIVE!**

### 3811 NEW

1967-68 Fender, LH  
**DYNACORN EXCLUSIVE!**



### 3811A NEW

1967-68 Fender, w/o Lamp Hole, RH  
**DYNACORN EXCLUSIVE!**

### 3811B NEW

1967-68 Fender, w/o Lamp Hole, LH  
**DYNACORN EXCLUSIVE!**

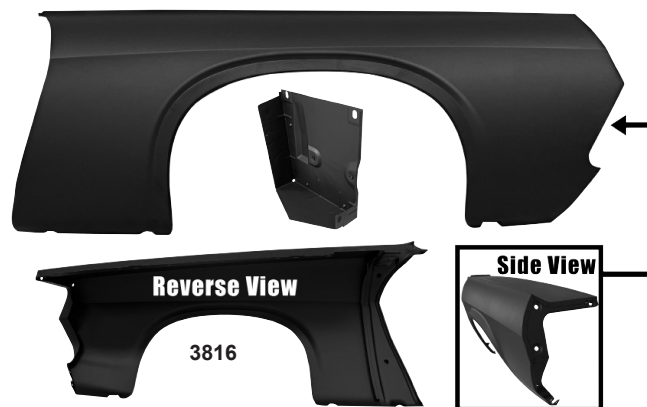


### 3816 NEW

1969-70 Fender, RH, Custom w/o Holes  
**DYNACORN EXCLUSIVE!**

### 3817 NEW

1969-70 Fender, LH, Custom w/o Holes  
**DYNACORN EXCLUSIVE!**



# MERCURY COUGAR

## Export & Firewall / Tower Braces

### 3635L **NEW**

1967-70 Export Brace, Chrome



### 3635M **NEW**

1967-70 Export Brace, Painted



### 3635Q **NEW**

1967-68 Firewall to Tower Brace



### 3631Y **NEW**

1969-70 Firewall to Tower Brace



## Monte Carlo Bars

### 3635R **NEW**

1967-68 Monte Carlo Bar, Curved, Chrome



### 3635S **NEW**

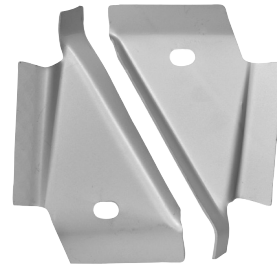
1967-68 Monte Carlo Bar, Curved, Painted



## Torque Boxes

### 3651WT **NEW**

1968-70 Torque Box Gussets, Weld Through Primer

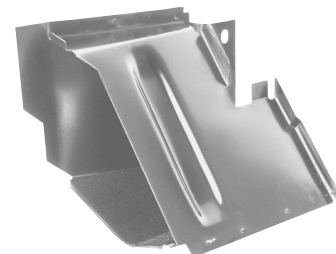


### 3652WT **NEW**

1969-70 Torque Box, RH, Convertible, Weld Through Primer

### 3653WT **NEW**

1969-70 Torque Box, LH, Convertible, Weld Through Primer



3653WT



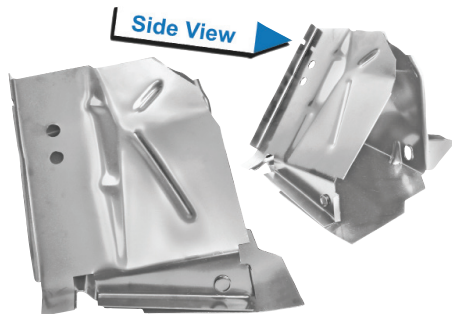
## Torque Boxes

### 3654WT **NEW**

1967-70 Torque Box, RH, Weld Through Primer

### 3655WT **NEW**

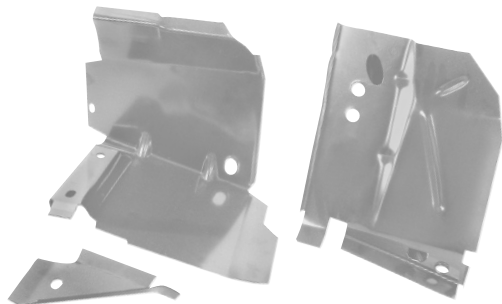
1967-68 Torque Box, LH, Weld Through Primer



3655WT

### 3655AWT **NEW**

1969-70 Torque Box, LH, Weld Through Primer



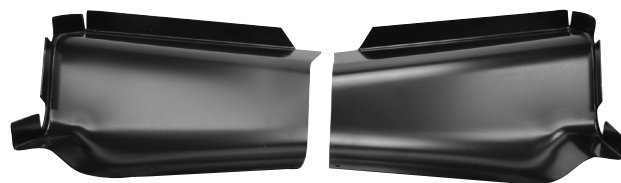
### 3653A

1969-70 Rear Torque Box Top Plates, Pair, Convertible



### 3653B

1967-70 Rear Torque Box Top Plates, Pair



## Shock Towers & Components

### 3630SX **NEW**

1967-68 Front Apron Assembly w/o Shock Towers



# MERCURY COUGAR

## Shock Towers & Components

### 3630UX **NEW**

1969-70 Front Apron Assembly w/o Shock Towers

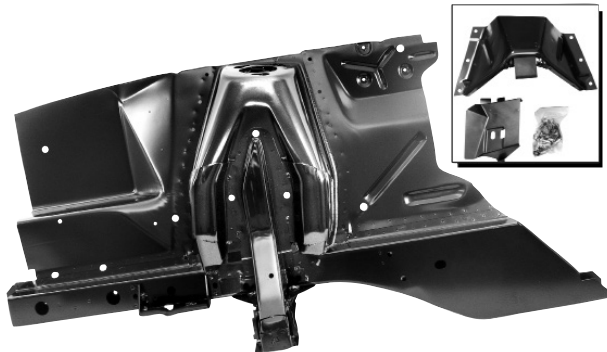


### 3630R **NEW**

1967-68 Complete Shock Tower & Apron Assembly, RH

### 3630S **NEW**

1967-68 Complete Shock Tower & Apron Assembly, LH



3630R

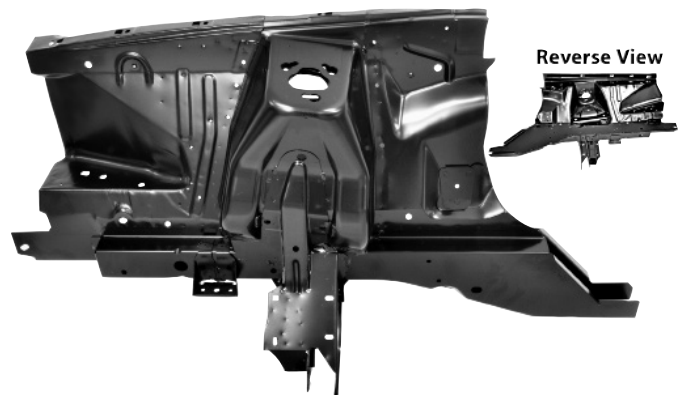


### 3630Y **NEW**

1971-73 Complete Shock Tower & Apron Assembly, RH

### 3630Z **NEW**

1971-73 Complete Shock Tower & Apron Assembly, LH



3630Y

Reverse View

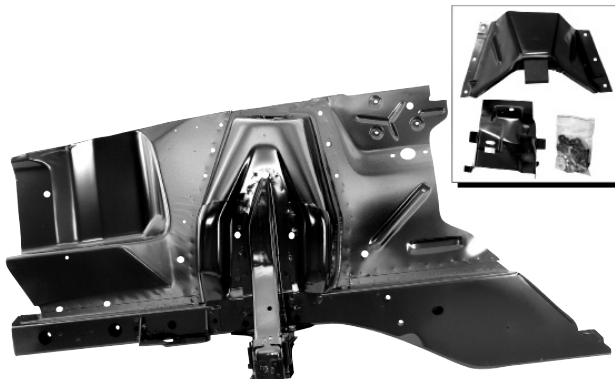


### 3630T **NEW**

1969-70 Complete Shock Tower & Apron Assembly, RH

### 3630U **NEW**

1969-70 Complete Shock Tower & Apron Assembly, LH



3630T



### 3630ZC **NEW**

1971-73 Shock Tower Cap, Painted



### 3630ZD **NEW**

1971-73 Shock Tower Cap, Chrome



### 3631D **NEW**

1967-70 Shock Tower Cap, Painted



### 3631F **NEW**

1967-70 Shock Tower Cap, Chrome



## Shock Towers & Components

### 3630J **NEW**

1967-70 Outer Shock Tower, RH

### 3630K **NEW**

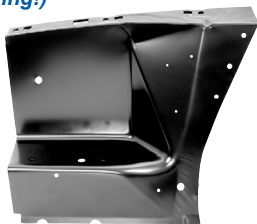
1967-70 Outer Shock Tower, LH



3630J

### 3634J **NEW**

1967-68 Front Fender Apron, RH  
*(New Tooling!)*



3634J

### 3634K **NEW**

1967-68 Front Fender Apron, LH  
*(New Tooling!)*



### 3634C **NEW**

1969-70 Front Fender Apron, RH

### 3634D **NEW**

1969-70 Front Fender Apron, LH



3634C

### 3634E **NEW**

1971-73 Front Fender Apron, RH

### 3634F **NEW**

1971-73 Front Fender Apron, LH



3634E

### 3634L **NEW**

1967-68 Rear Fender Apron, RH

### 3634M **NEW**

1967-68 Rear Fender Apron, LH



3634L

### 3634P **NEW**

1969-70 Rear Fender Apron, RH

### 3634Q **NEW**

1969-70 Rear Fender Apron, LH



3634P

### 3634G **NEW**

1971-73 Rear Fender Apron, RH

### 3634H **NEW**

1971-73 Rear Fender Apron, LH



3634G

### 3634LA **NEW**

1967-68 Rear Apron Extension, RH

### 3634MA **NEW**

1967-68 Rear Apron Extension, LH



3634LA

### 3634R **NEW**

1969-70 Rear Apron Extension, RH

### 3634S **NEW**

1969-70 Rear Apron Extension, LH



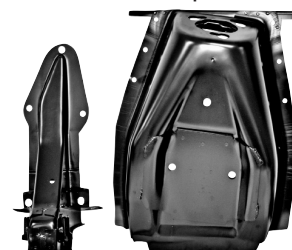
3634R

### 3631T **NEW**

1967-68 Shock Tower Replacement, RH

### 3631U **NEW**

1967-68 Shock Tower Replacement, LH



3631T

### 3631W **NEW**

1969-70 Shock Tower Replacement, RH

### 3631X **NEW**

1969-70 Shock Tower Replacement, LH



3631W

# MERCURY COUGAR

## Grille Components

**3826 COMING SOON!**  
1970 Grille Surround Center



**3841B**  
1967-68 Hood Inner Panel  
**DYNACORN EXCLUSIVE!**



## Hoods & Components

**3841A NEW**  
1967-68 Hood  
**DYNACORN EXCLUSIVE!**



**3842 NEW**  
1969 Hood  
**DYNACORN EXCLUSIVE!**



Sales: 866.640.1324

[info@goldenleafautomotive.com](mailto:info@goldenleafautomotive.com)



## Hoods & Components

**3843 NEW**

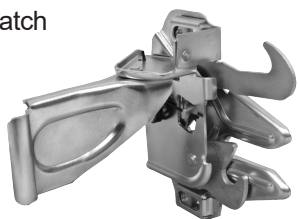
1970 Hood

**DYNACORN EXCLUSIVE!**



**M3530C NEW**

1967-68 Hood Latch



**M3544X NEW**

1967-70 Hood Hinge, RH,

**PREMIUM QUALITY**

**M3545X NEW**

1967-70 Hood Hinge, LH,

**PREMIUM QUALITY**



**BH41 NEW**

1967-68 Billet Hood Hinge, Pair



**BH42 NEW**

1969-70 Billet Hood Hinge, Pair



**M3510 NEW**

1967-73 Radiator Support to Hood Bumpers



**M3547A NEW**

1967-68 Hood Catch / Grille Support



**M3547B NEW**

1969-70 Hood Latch Support



# MERCURY COUGAR

## Firewalls

### 3631ZAWT

1967-68 Firewall, Fastback & Coupe, Weld Through Primer  
(Trim for Use on Convertible)



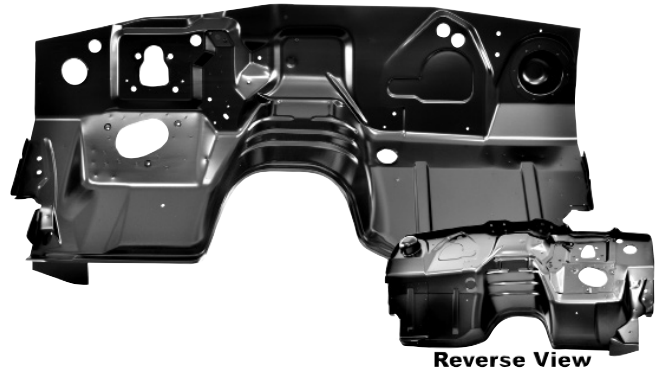
### 3631ZBWT

1969-70 Firewall, Fastback & Coupe, Weld Through Primer  
(Trim for Use on Convertible)



### 3631ZG NEW

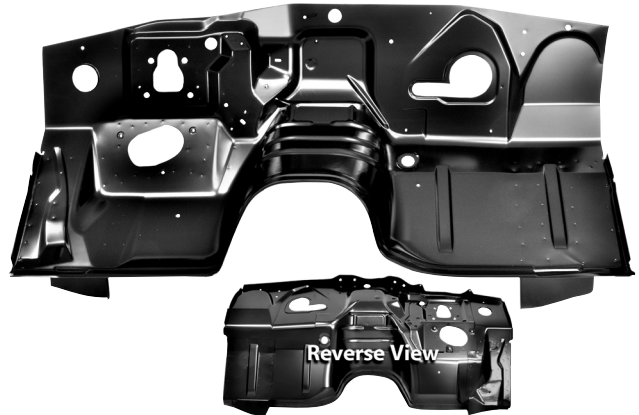
1971-73 Firewall w/o A/C, Convertible



Reverse View

### 3631ZH NEW

1971-73 Firewall, A/C



Reverse View

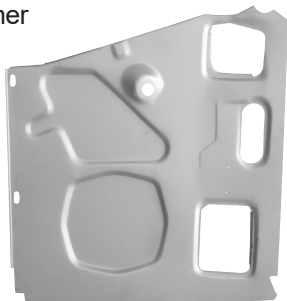
## Cowl & Pillar Panels

### 3625GWT NEW

1967-68 Pillar / Kick Panel, RH,  
Weld Through Primer

### 3625HWT NEW

1967-68 Pillar / Kick Panel, LH,  
Weld Through Primer



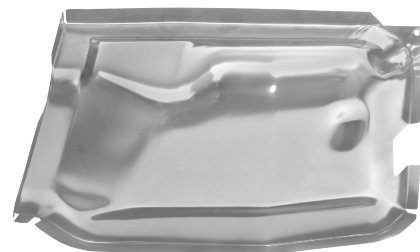
3625GWT

### 3625JWT NEW

1969-70 Outer Pillar Panel, RH, Weld Through Primer

### 3625KWT NEW

1969-70 Outer Pillar Panel, LH, Weld Through Primer



3625JWT



## Cowl & Pillar Panels

### 3625R **NEW**

1971-73 Pillar / Kick Panel, RH

### 3625S **NEW**

1971-73 Pillar / Kick Panel, LH



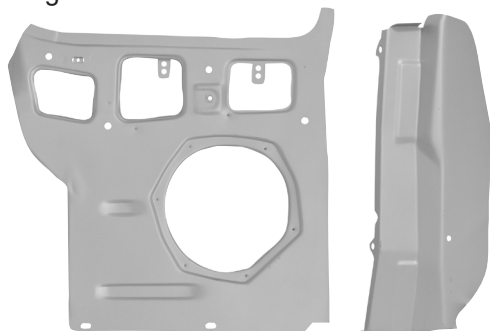
Reverse View

### 3625NWT

1969-70 Inner Pillar / Kick Panel w/ Post, 2 Pcs., RH, Weld Through Primer

### 3625PWT

1969-70 Inner Pillar / Kick Panel w/ Post, 2 Pcs., LH, Weld Through Primer



3625NWT

### 3820

1967-68 Cowl Panel / Grille Assembly

**DYNACORN EXCLUSIVE!**

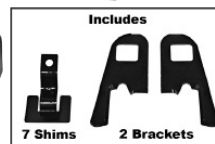
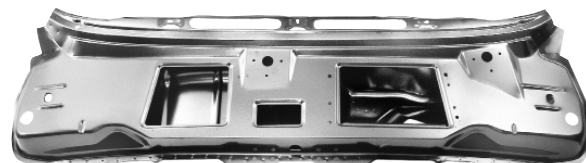


Reverse View



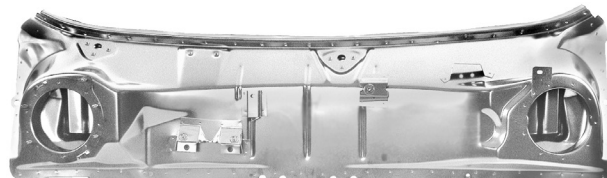
### 3648JWT **NEW**

1969-70 Cowl Grille Assembly, Weld Through Primer

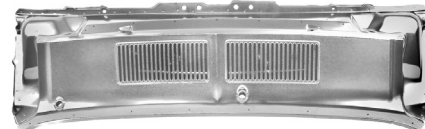


### 3648HWT **NEW**

1967-68 Cowl Grille Assembly, Weld Through Primer



Underside View of 3648HWT



### 3648E

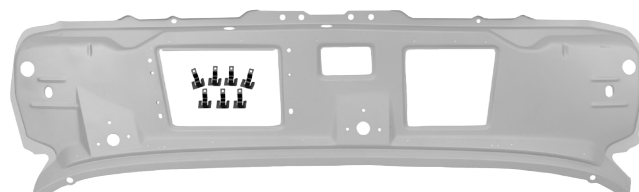
1967-68 Lower Cowl Panel



Underside View

### 3648KWT **NEW**

1969-70 Upper Cowl Panel w/ Brackets, Weld Through Primer



# MERCURY COUGAR

## Cowl & Pillar Panels

### 3648KA **NEW**

1971-73 Upper / Lower Cowl Panel w/o A/C



### M33888 **NEW**

1967-70 Wiper Motor



## Dash Panel & Components

### 3625DW

1969-70 Lower Steering Column Cover

**DYNACORN EXCLUSIVE!**



### 3625DR

1969-70 A/C Vent Register, Pair

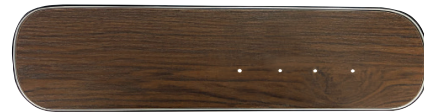
**DYNACORN EXCLUSIVE!**



### 3825 **NEW**

1969-70 Dash Insert, Wood Grain, STD w/o Logo

**DYNACORN EXCLUSIVE!**



## Floor Pans & Components

### 3631ZDWT **NEW**

1969-70 Firewall to Floor Pan Supports, Weld Through Primer, Fastback / Coupe



### 3631ZCWT **NEW**

1967-68 Firewall to Floor Pan Supports, Weld Through Primer, Coupe/Fastback



### 3610BWT **NEW**

1967-70 Transmission Support, Weld Through Primer



## Floor Pans & Components

### 3610C **NEW**

1967-70 Transmission Support, Extended  
(Extra Tall for 6-Spd. Transmission)



### 3648LWT **NEW**

1967-68 Front Floor Pan Support,  
Weld Through Primer



### 3648M **NEW**

1971-73 Full Floor Pan, RH

### 3648N **NEW**

1971-73 Full Floor Pan, LH



3648M

### 3648MA **NEW**

1971-73 Floor Pan Front Section, RH

### 3648NA **NEW**

1971-73 Floor Pan Front Section, LH



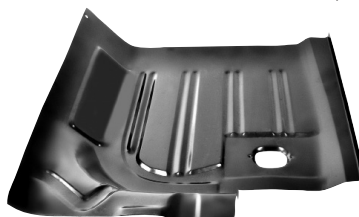
3648MA

### 3648MB **NEW**

1971-73 Floor Pan Rear Section, RH

### 3648NB **NEW**

1971-73 Floor Pan Rear Section, LH



3648MB

### 3649PWT **NEW**

1967-68 Seat Platform,  
Weld Through Primer, RH

### 3649QWT **NEW**

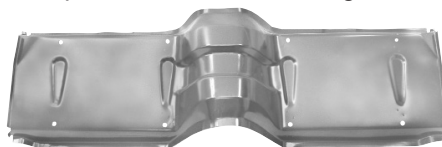
1967-68 Seat Platform,  
Weld Through Primer, LH



3649PWT

### 3647YCWT **NEW**

1967-68 Seat Platform, 1 Pc.,  
Coupe / Fastback, Weld Through Primer



### 3647YJ **NEW**

1969-70 1-Piece Seat Platform, Low Profile,  
Coupe & Fastback

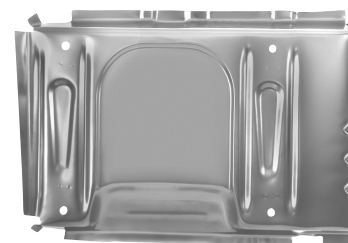


### 3647YAWT **NEW**

1969-70 Seat Platform, Low Profile,  
Weld Through Primer, Fastback, RH

### 3647YBWT **NEW**

1969-70 Seat Platform, Low Profile,  
Weld Through Primer, Fastback, LH



3647YAWT

### 3601L **NEW**

1971-73 Crossmember  
(Under Engine)



Underside View

### 3648NG **NEW**

1971-73 Crossmember (Front),  
w/ Strut Rod Mounts



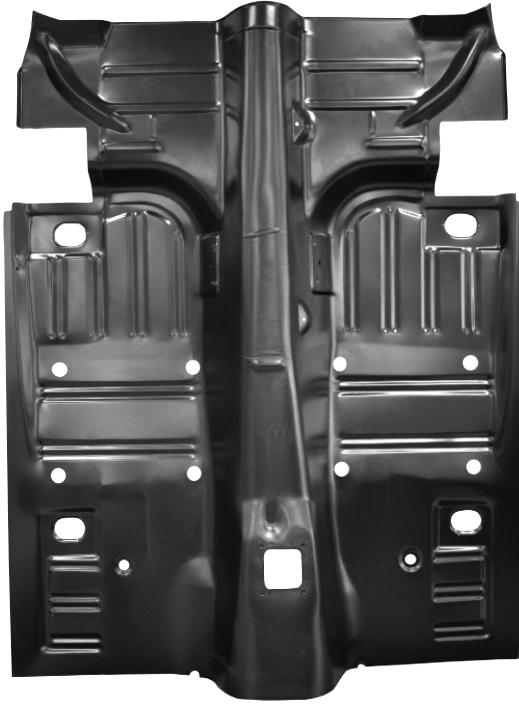
Reverse View

# MERCURY COUGAR

## Floor Pans & Components

### 3648B *NEW*

1967-70 Complete Floor Pan, Convertible  
(Modify to Fit 1969-73)



### 3648D

1969-70 Complete Floor Pan



### 3648C

1967-70 Complete Floor Pan



### 3648NC

1971-73 Complete Floor Pan



Sales: 866.640.1324

[info@goldenleafautomotive.com](mailto:info@goldenleafautomotive.com)



## Trunk Floor Pans & Components

**3849KIT**

1967-68 Trunk Floor Kit (Not Assembled)

**DYNACORN EXCLUSIVE!**



**3849T**

1967-68 Trunk Floor Complete

**DYNACORN EXCLUSIVE!**



**3849U COMING SOON!**

1969-70 Trunk Floor Panel Complete



**3629A NEW**

1967-68 Bumper Mount Brackets



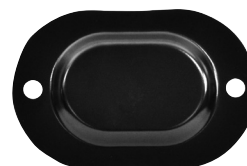
**3629B NEW**

1969-70 Bumper Mount Brackets



**3648W**

1967-70 Floor Pan Plug



# MERCURY COUGAR

## Trunk Floor Pans & Components

**3849E COMING SOON!**  
1967-68 Trunk Floor Drop off, Pair  
**DYNACORN EXCLUSIVE!**



**3870 COMING SOON!**  
1969 Rocker Panel, RH  
**3871 COMING SOON!**  
1969 Rocker Panel, LH



**3649Y NEW**  
1967-70 Rear Shock Mount



**3872 COMING SOON!**  
1970 Rocker Panel, RH  
**3873 COMING SOON!**  
1970 Rocker Panel, LH



## Rocker Panels

**3647LGWT NEW**  
1967-70 Rocker Panel, Inner RH,  
Weld Through Primer

**3647MGWT NEW**  
1967-70 Rocker Panel, Inner LH,  
Weld Through Primer



3647LGWT

**3647LHWT NEW**  
1967-68 Rocker Panel, Inner RH,  
Weld Through Primer, Convertible

**3647MHWT NEW**  
1967-68 Rocker Panel, Inner LH,  
Weld Through Primer, Convertible



3647LHWT

## Roof Panel

**3844A COMING SOON!**  
1969-70 Roof Inner Brace





## Roof Panel

**3843A**  
1967-68 Roof Panel  
**DYNACORN EXCLUSIVE!**



**SIDE VIEW**



**3844 COMING SOON!**  
1969-70 Roof Outer Skin Panel



## Frame Rail & Extensions

**3630W NEW**  
1967-70 Front Frame Rail, RH  
**3630X NEW**  
1967-70 Front Frame Rail, LH



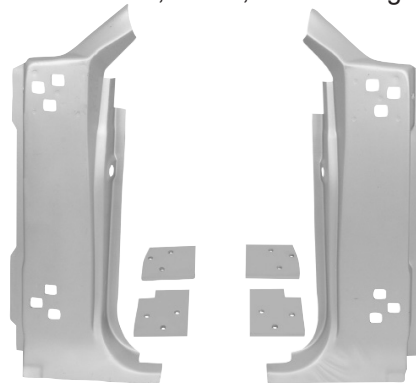
## Convertible Top Frame

**3643YWT**  
1968-69 Front Roof Brace, Weld Through Primer

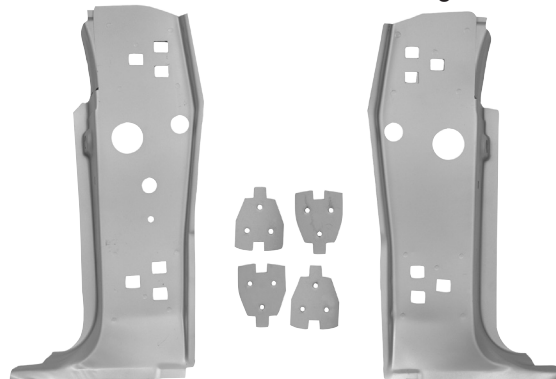


## "A" Pillar Panels

**3625MWT NEW**  
1967-68 "A" Pillar Panels, 6 Pcs., Weld Through Primer



**3625NAWT NEW**  
1969-70 "A" Pillar Panels, 6 Pcs., Weld Through Primer



# MERCURY COUGAR

## Door Hardware & Accessories

### 3866 **COMING SOON!**

1969-70 Door Shell, RH

### 3867 **COMING SOON!**

1969-70 Door Shell, LH



### 3640QP **NEW**

1967-68 Door Hinge Pin, Short (2 1/2"), Silver Zinc Plated



### 3640SHP **NEW**

1967-68 Door Hinge Pin, Long (4"), Parkerized



### 3640QB **NEW**

1967-73 Door Hinge Bushing (2 Per Hinge)



### 3640SA **NEW**

1967-68 Door Hinge Lower, RH

### 3640SB **NEW**

1967-68 Door Hinge Lower, LH



3640SA

### 3640SC **NEW**

1969-70 Door Hinge Lower, RH

### 3640SD **NEW**

1969-70 Door Hinge Lower, LH



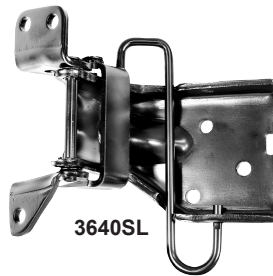
3640SC

### 3640SL

1971-73 Door Hinge Lower, RH

### 3640SM

1971-73 Door Hinge Lower, LH



3640SL

### 3640SE **NEW**

1967-68 Door Hinge Upper, RH

### 3640SF **NEW**

1967-68 Door Hinge Upper, LH



3640SE

### 3640SG **NEW**

1969-70 Door Hinge Upper, RH

### 3640SH **NEW**

1969-70 Door Hinge Upper, LH



3640SG

### 3640SJ **NEW**

1971-73 Door Hinge Upper, RH

### 3640SK **NEW**

1971-73 Door Hinge Upper, LH



3640SJ

### 3127P **NEW**

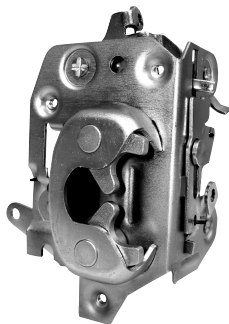
1968-72 Door Lock Knob



## Door Hardware & Accessories

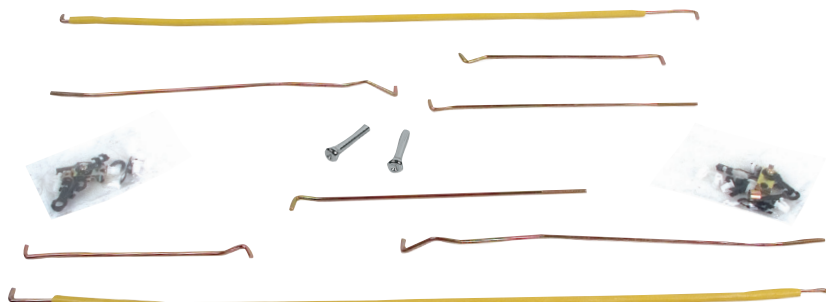
**M3616C NEW**  
1967-68 Door Latch, RH

**M3616D NEW**  
1967-68 Door Latch, LH



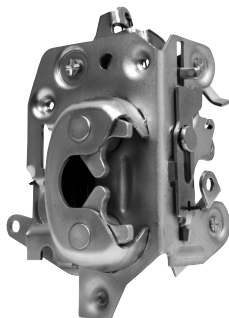
M3616C

**3640ZC NEW**  
1967-68 Door Latch Control Rod, Set



**M3616E NEW**  
1969-70 Door Latch, RH

**M3616F NEW**  
1969-70 Door Latch, LH



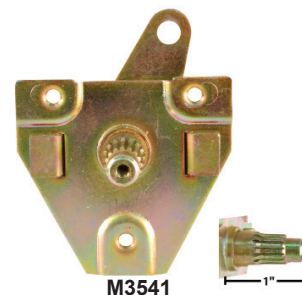
M3616E

**M3546A**  
1967-70 Door Striker Set, Stainless



**M3540 NEW**  
1967-68 Door Handle Control Relay, RH

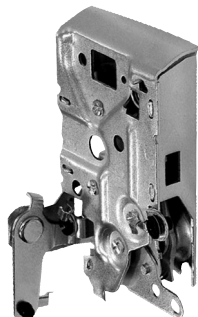
**M3541 NEW**  
1967-68 Door Handle Control Relay, LH



M3541

**M3616J NEW**  
1971-73 Door Latch, RH

**M3616K NEW**  
1971-73 Door Latch, LH



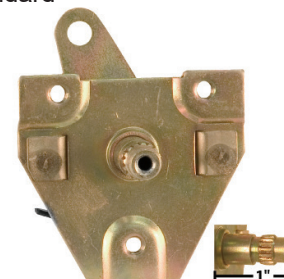
M3616J

**M3546**  
1967-70 Door Striker Set, Zinc Plated w/ Shim



**D3620 NEW**  
1967-68 Door Handle Control Relay, RH, Standard

**D3621 NEW**  
1967-68 Door Handle Control Relay, LH, Standard



D3620

# MERCURY COUGAR

## Door Hardware & Accessories

### M3525 **NEW**

1967 Interior Door Handle, Except Deluxe Pony



### M3527 **NEW**

1967 Window Crank, Late Screw Style



### M3525A **NEW**

1968-70 Window Crank Knob Kit, Black, 3 Pcs.



### M3617 **NEW**

1967-68 Exterior Door Handles



### M3529D **NEW**

1968 Vent Window Handles



### M3525B **NEW**

1968-70 Window Crank Knob Kit, Clear, 3 Pcs.



### M3529C

1967 Vent Window Handles



### M3693A **NEW**

1967 Window Regulator, RH

### M3693B **NEW**

1967 Window Regulator, LH



### M3529A **NEW**

1968-70 Quarter Window Crank w/Set Screw, (Less Knob)



### M3529 **NEW**

1967 Quarter Window Crank w/ Set Screw

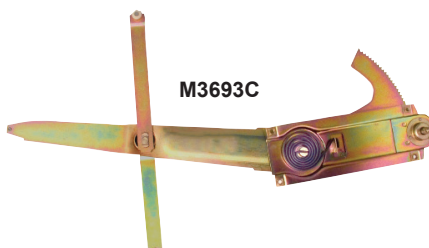


### M3693C **NEW**

1968 Window Regulator, RH

### M3693D **NEW**

1968 Window Regulator, LH



### M3528 **NEW**

1968-70 Window Crank, (Less Knob)



## Quarter Panels & Components

**3848C**

1967-68 Rear Quarter Panel Bracket, RH

**DYNACORN EXCLUSIVE!**

**3848D**

1967-68 Rear Quarter Panel Bracket, LH

**DYNACORN EXCLUSIVE!**

3848C



**3848E NEW**

1967-68 Quarter to Bumper Splash Shields, Pair, Rubber



**3852 COMING SOON!**

1969-70 Quarter Extension, RH

**3853 COMING SOON!**

1969-70 Quarter Extension, LH



**3848A**

1967-68 Quarter Panel, RH

**DYNACORN EXCLUSIVE!**

**3848B**

1967-68 Quarter Panel, LH

**DYNACORN EXCLUSIVE!**

3848B



**3848L COMING SOON!**

1969-70 Quarter Panel, RH w/o Hole, Full Custom

**3848M COMING SOON!**

1969-70 Quarter Panel, LH w/o Hole, Full Custom



## Wheelhouses

**3831P**

1967-68 Wheelhouse Outer, RH

**DYNACORN EXCLUSIVE!**

**3831Q**

1967-68 Wheelhouse Outer, LH

**DYNACORN EXCLUSIVE!**

3831P



**3831K**

1967-68 Wheelhouse Inner, RH

**DYNACORN EXCLUSIVE!**

**3831L**

1967-68 Wheelhouse Inner, LH

**DYNACORN EXCLUSIVE!**

3831K



**3631SF NEW**

1971-73 Inner Wheelhouse, RH

**3631SG NEW**

1971-73 Inner Wheelhouse, LH

3631SF





# MERCURY COUGAR

## Rear Deck Filler Panels

**3847**

1967-68 Rear Deck Filler Panel  
**DYNACORN EXCLUSIVE!**



**3847A**

1969-70 Deck Lid Filler Panel, Coupe  
**DYNACORN EXCLUSIVE!**



## Trunk Lid & Latch

**3849A NEW**

1967-68 Trunk Lid  
**DYNACORN EXCLUSIVE!**



**3849C NEW**

1969-70 Trunk Lid  
**DYNACORN EXCLUSIVE!**



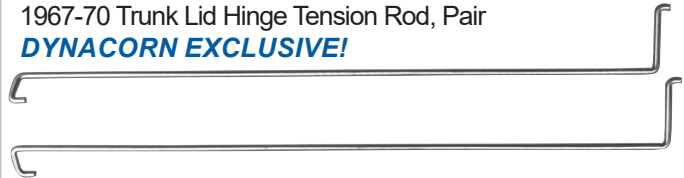
**3849F NEW**

1967-70 Trunk Lid Hinge, Pair  
**DYNACORN EXCLUSIVE!**



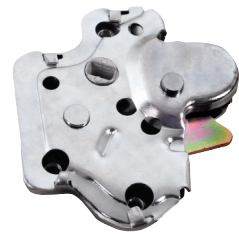
**3849G NEW**

1967-70 Trunk Lid Hinge Tension Rod, Pair  
**DYNACORN EXCLUSIVE!**



**M3519 NEW**

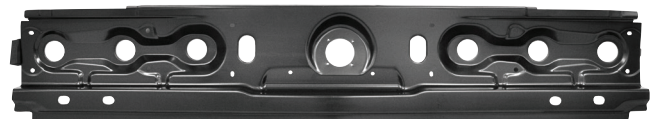
1967-73 Trunk Lid Latch



## Tail Lamp Panel & Components

**3849B NEW**

1967-68 Tail Lamp Panel  
**DYNACORN EXCLUSIVE!**



**3849D COMING SOON!**

1969 Tail Lamp Panel  
**DYNACORN EXCLUSIVE!**





## Tail Lamp Panel & Components

### 3850 **NEW**

1967-68 Tail Lamp Panel Corner, RH  
**DYNACORN EXCLUSIVE!**

### 3851 **NEW**

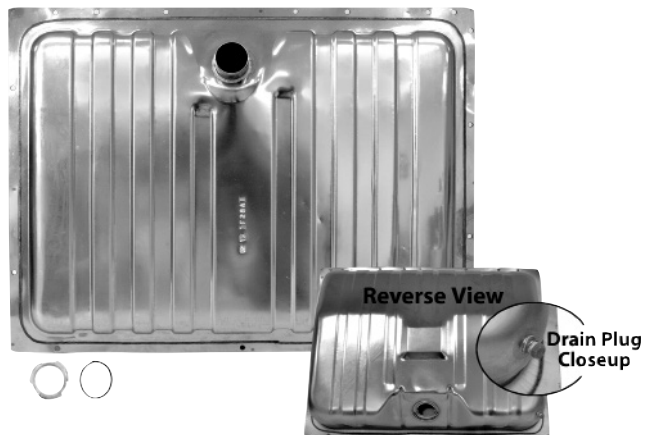
1967-68 Tail Lamp Panel Corner, LH  
**DYNACORN EXCLUSIVE!**



3850

### T02S **NEW**

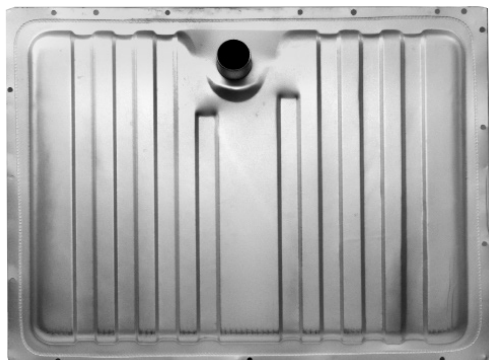
1967-68 Stainless Fuel Tank, 16 Gallon, w/ Drain Plug



## Fuel Tanks

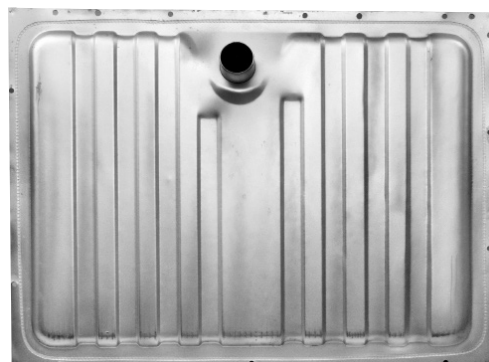
### T01 **NEW**

1967-68 Galvanized Fuel Tank, 16 Gallon, w/o Drain Plug



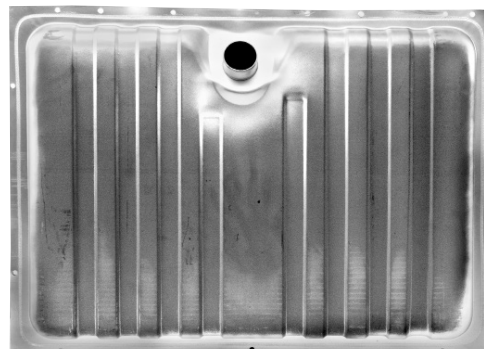
### T02 **NEW**

1967-68 Galvanized Fuel Tank, 16 Gallon, w/ Drain Plug



### T23 **NEW**

1969 Galvanized Fuel Tank, 20 Gallon, w/o Drain Plug



### T23A **NEW**

1969 Stainless Fuel Tank, 20 Gallon, w/ Drain Plug



# MERCURY COUGAR

## Fuel Tanks

### T24 **NEW**

1970 Galvanized Fuel Tank, 22 Gallon, w/o Drain Plug



### T24S **NEW**

1970 Stainless Fuel Tank, 22 Gallon w/ Drain Plug



### T24B **NEW**

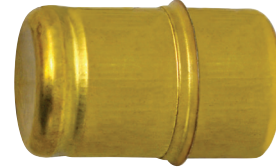
1971-73 Stainless Fuel Tank, 20 Gallon



## Fuel Sending Units

### T03B **NEW**

1967-73 Fuel Sender Unit Float



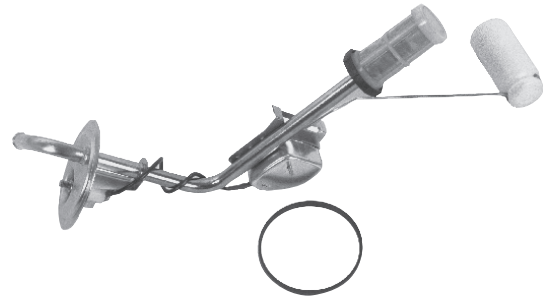
### T03A

1967-68 Fuel Sender, Stainless All Engines



### T04

1969 Fuel Sender All Engines w/ Gasket, No locking Ring



### T04A

1969 Fuel Sender, Stainless All Engines



## Fuel Sending Units

**T05**  
1970 Fuel Sender All Engines w/o Gasket, No locking Ring



**T05A**  
1970 Fuel Sender, Stainless All Engines



**T06A**  
1971-73 Fuel Sender, Stainless All Engines



## Fuel Filler Hose

**T01E NEW**  
1967-70 Fuel Filler Hose



## Fuel Tank Straps

**T24F NEW**  
1971-73 Fuel Tank Straps, 2 Pcs.



## Windshield Wiper Blade & Trans. Arms

**3609K NEW**  
1967-70 Windshield Wiper Arm, RH=LH



**3623 NEW**  
1967-68 Wiper Motor Transmission Arm



**3623A NEW**  
1967-68 Wiper Motor Arm



# MERCURY COUGAR

## Exterior Mirrors

### M3524EC **NEW**

1967-73 Standard Ext. Mirror  
(w/ Convex Glass & Gaskets)



Reverse View

### M3524F **NEW**

1967-73 Mirror Gasket Kit



## Hood Moldings

### M3820 **COMING SOON!**

1969 Hood Molding w/ Clips 7 Pcs.



## Windshield Moldings

### M3658A **NEW**

1967-68 Windshield Moldings, 5 Pcs., Coupe / Fastback



### M3580

1969-70 Windshield Moldings 5 Pcs., Coupe



### M3582 **NEW**

1971-73 Windshield Moldings 2 Pcs., Coupe



### M3654 **NEW**

1967-68 Windshield Molding, Upper, RH

### M3655 **NEW**

1967-68 Windshield Molding, Upper, LH



M3654

### M3656 **NEW**

1967-68 Windshield Molding, Coupe / Fastback, RH

### M3657 **NEW**

1967-68 Windshield Molding, Coupe / Fastback, LH



M3656

### M3658 **NEW**

1967-68 Windshield Molding, Lower

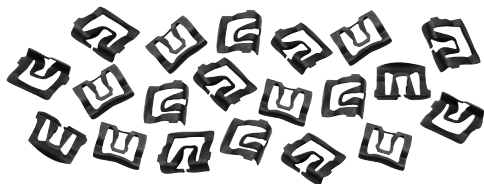




## Windshield Moldings

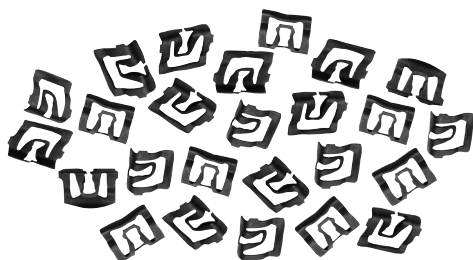
### M3658B **NEW**

1967-68 Windshield Mldg. Clips, 20 Pcs.



### M3658C **NEW**

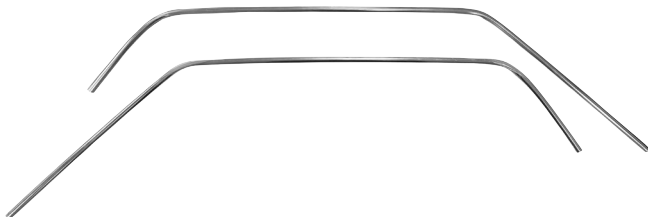
1969-70 Windshield Mldg. Clips, 25 Pcs.



## Drip Rail Moldings

### M3850 **NEW**

1969-70 Drip Rail Molding w/ Vinyl Top, Pair



## Rocker Mldg.

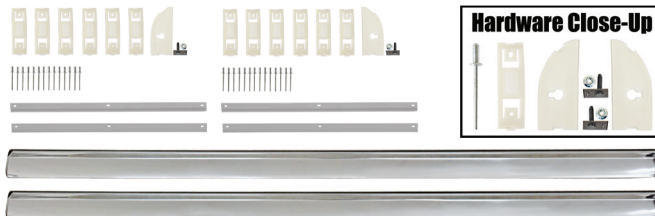
### M3619A

1967-68 Rocker Panel Moldings 2 Pcs., w/ 2 Sets of Clips



### M3830

1970 Rocker Panel Molding, Pair, w/ Clips STD



## Rear Window Moldings

### M3584 **NEW**

1971-73 Rear Window Molding, 4 Pcs., Coupe



### M3836 **NEW**

1969-70 Rear Window Molding, 4 Pcs.



## Headliner Molding

### M3649G **NEW**

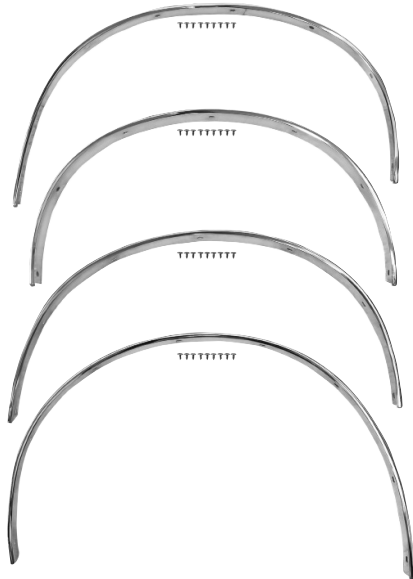
1969-70 Front Headliner Molding



## Wheel Opening Moldings

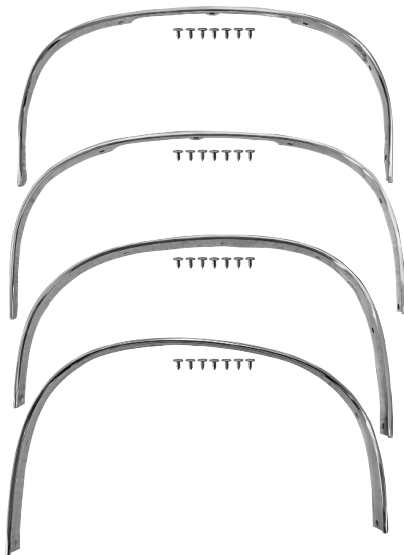
### M3800 **NEW**

1967-68 Wheel Opening Molding, Set of 4, OE Style



### M3801 **NEW**

1969-70 Wheel Opening Molding, Set of 4, OE Style



## Eyebrow Molding

### M3810 **COMING SOON!**

1969 Eyebrow Molding w/ Clips, Pair



## Trunk Molding

### M3860 **NEW**

1967-70 Molding Trunk Lid w/ Clips



## Exterior Electrical & Components

### L3602 **NEW**

1967-68 Back-Up Lamp Assembly, RH

### L3603 **NEW**

1967-68 Back-Up Lamp Assembly, LH



### L3604 **NEW**

1967-68 Back-Up Lamp Assembly, RH

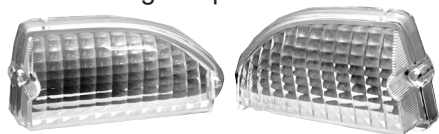
### L3605 **NEW**

1967-68 Back-Up Lamp Assembly, LH



## Exterior Electrical & Components

**L3660B NEW**  
1969 Parking Lamp Lenses



**L3660G NEW**  
1969 Parking Lamp Assembly, RH  
**L3660H NEW**  
1969 Parking Lamp Assembly, LH



L3660G

**L3610A NEW**  
1967-73 License Plate Lamp



Box Size:  
7.5" x 2.5" x 2"  
Weight:  
.5 lbs.

**L3661 NEW**  
1968 Front Side Marker Assembly



**L3661A NEW**  
1969 Front Side Marker Lens Assembly

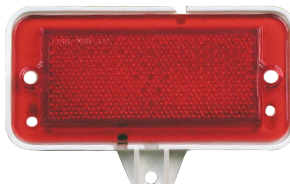


**L3840 NEW**  
1969 Rear Marker Lens w/ Gasket,  
RH=LH



**L3666 NEW**  
1971-73 Rear Side Marker Lens  
Assembly, RH

**L3667 NEW**  
1971-73 Rear Side Marker Lens  
Assembly, LH

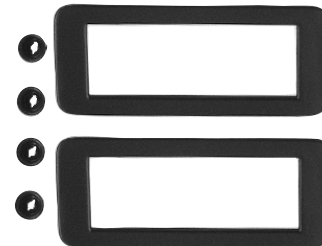


L3667

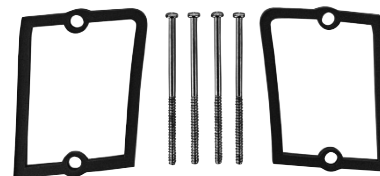
**L3661B NEW**  
1969 Front / Rear Side Marker Bezels



**L3668 NEW**  
1971-73 Rear Side Marker Bezels



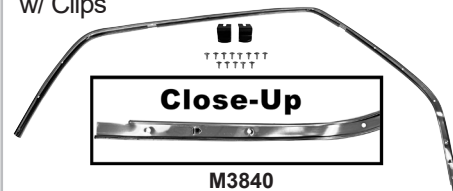
**L3830 NEW**  
1969-70 Back-Up Lights Lens & Gasket,  
Pair



## Glass, Weatherstrip & Seals

**M3840 NEW**  
1969-70 Weather Strip Retainer, RH,  
w/ Clips

**M3841 NEW**  
1969-70 Weather Strip Retainer, LH,  
w/ Clips



M3840

**3607A NEW**  
1967-68 Quarter Glass Seal, RH  
**3607B NEW**  
1967-68 Quarter Glass Seal, LH



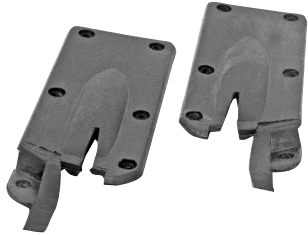
3607A

# MERCURY COUGAR

## Glass, Weatherstrip & Seals

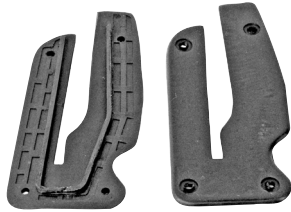
### 3607G **NEW**

1967-68 Quarter Window Body Seals



### 3607H **NEW**

1969-70 Quarter Window-Body Seals, Coupe / Convertible



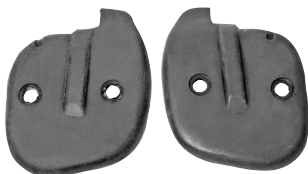
### 3607N **NEW**

1967-68 Door / Window Seals



### 3607P **NEW**

1969-70 Door / Window Seals



### 3608F **NEW**

1967-68 Roof Rail Seals, Coupe



### 3607Q **NEW**

1967-68 Window Glass Runs, Pair

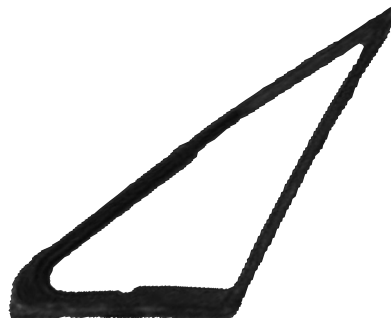


### 3641EE **NEW**

1967-68 Vent Window Weatherstrip, RH

### 3641EF **NEW**

1967-68 Vent Window Weatherstrip, LH



3641EE

### 3641FD **NEW**

1967 Complete Vent Window Assembly, RH

### 3641FE **NEW**

1967 Complete Vent Window Assembly, LH



3641FD

### 3641FL **NEW**

1968 Complete Vent Window Assembly, RH

### 3641FM **NEW**

1968 Complete Vent Window Assembly, LH



3641FL



## Glass, Weatherstrip & Seals

### 3641FA **NEW**

1967-68 Window Guide, Rear, RH

### 3641FB **NEW**

1967-68 Window Guide, Rear, LH



**R  
E  
V  
E  
R  
S  
E  
V  
I  
E  
W**

### 3641FP **NEW**

1967-68 Vent Window Frame, RH

### 3641FQ **NEW**

1967-68 Vent Window Frame, LH



### 3614AA **NEW**

1967-68 Door Window Frame Kit, RH

### 3614AB **NEW**

1967-68 Door Window Frame Kit, LH



### 3614 **NEW**

1967-68 Door Glass Kit w/ Window Frame and Glass Run, RH

### 3614A **NEW**

1967-68 Door Glass Kit w/ Window Frame and Glass Run, LH



### 3614DK

1967-68 Door Glass Channel / Retainer, RH,  
Fits all Body Styles

### 3614EK

1967-68 Door Glass Channel / Retainer, LH,  
Fits all Body Styles



# MERCURY COUGAR

## Glass, Weatherstrip & Seals

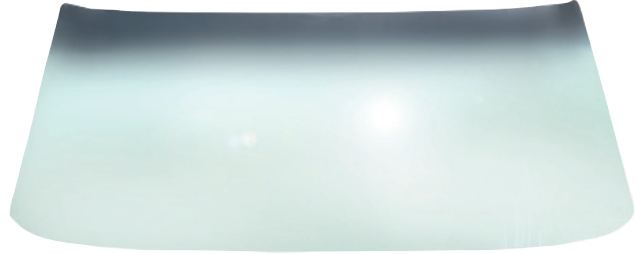
### X3670 **NEW**

1967-68 Windshield Glass w/ Rubber Seal  
Tinted & Shaded, Fastback



### X3672 **NEW**

1969-70 Front Windshield Glass, Tinted & Shaded,  
Fastback



## Emblems

### EM3641 **NEW**

1967 Fender Emblem, "GT" Letters,  
2 Pcs.



### 3624G **NEW**

1967-68 Brake Pedal Support



### 3624J **NEW**

1969 Brake Pedal Support-to-Dash  
Bracket



## Pedal & Shifter Components

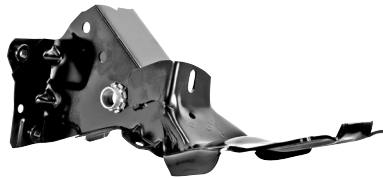
### 3624 **NEW**

1967-69 Brake Pedal Assembly,  
Automatic Transmission / Power Brake



### 3624H **NEW**

1969 Brake Pedal Support



### 3624K **NEW**

1970 Brake Pedal Support-to-Dash  
Bracket



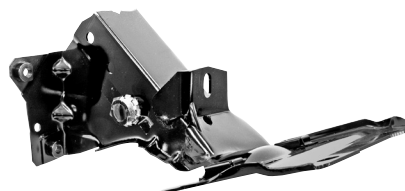
### 3624A **NEW**

1967 Brake / Clutch Pedal Assembly,  
Automatic Transmission / Standard  
Brakes



### 3624I **NEW**

1970 Brake Pedal Support



### 3641SH **NEW**

1967-68 Parking Brake Handle



## Pedal & Shifter Components

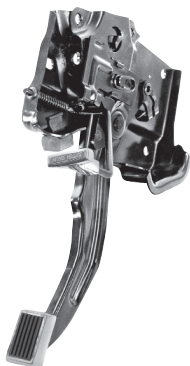
**3641T NEW**  
1967-68 Parking Brake Release



**3641TH NEW**  
1967 Parking Brake Handle



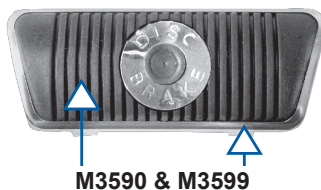
**3641W NEW**  
1969 Parking Brake Assembly



**3641X NEW**  
1970 Parking Brake Assembly

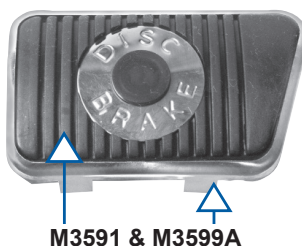


**M3590 NEW**  
1967 Disc Brake Pedal Pad, Automatic Transmission



M3590 & M3599

**M3591 NEW**  
1967-73 Disc Brake Pedal Pad, Standard



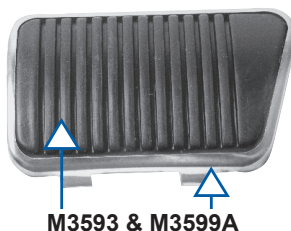
M3591 & M3599A

**M3592 NEW**  
1967 Brake Pedal Pad, Automatic Transmission



M3592 & M3599

**M3593 NEW**  
1967-73 Brake Pedal Pad, Standard



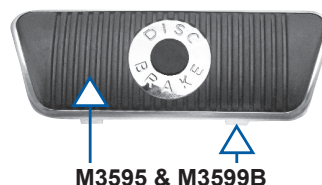
M3593 & M3599A

**M3594 NEW**  
1968-73 Drum Brake Pedal Pad, Automatic Transmission



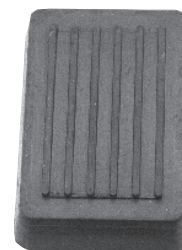
M3594 & M3599B

**M3595 NEW**  
1968-73 Disc Brake Pedal Pad



M3595 & M3599B

**M3596 NEW**  
1969 Parking Brake Pedal Pad



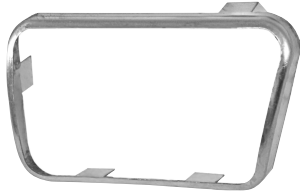
**M3599 NEW**  
1967 Brake Pedal Trim, Automatic Transmission



# MERCURY COUGAR

## Pedal & Shifter Components

**M3599A NEW**  
1967-73 Brake Pedal Trim, Standard



**M3599B NEW**  
1968-73 Brake Pedal Trim, Automatic Transmission



**3621A NEW**  
1969 Accelerator Assembly



**M3599F NEW**  
1969-70 Throttle Pedal Pad Trim



**M3599E NEW**  
1969-72 Throttle Pedal Pad w/ Pin, Spring, Stopper



## Rear View Mirrors / Sun Visor Arms

**M3523 NEW**  
1967 Rear View Mirror, Day / Night



**3609B NEW**  
1967-68 Sun Visor Arm



## Door Sill Scuff Plates

**M3650A NEW**  
1967-68 Door Scuff Plate, Stainless, Pair



**M3650 NEW**  
1967-68 Door Sill Scuff Plate





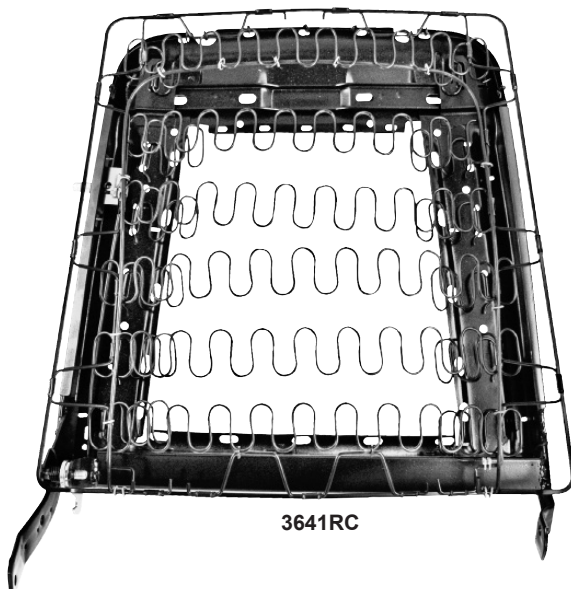
## Seats & Components

### 3641RB **NEW**

1968 Seat Back Frame w/ Spring, RH

### 3641RC **NEW**

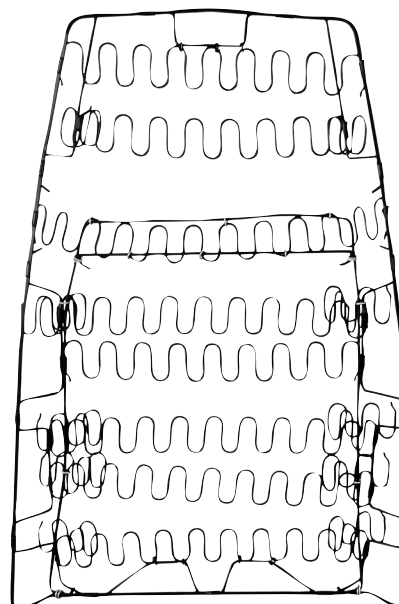
1968 Seat Back Frame w/ Spring, LH



3641RC

### 3641RV **NEW**

1970 Seat Back Spring, RH=LH

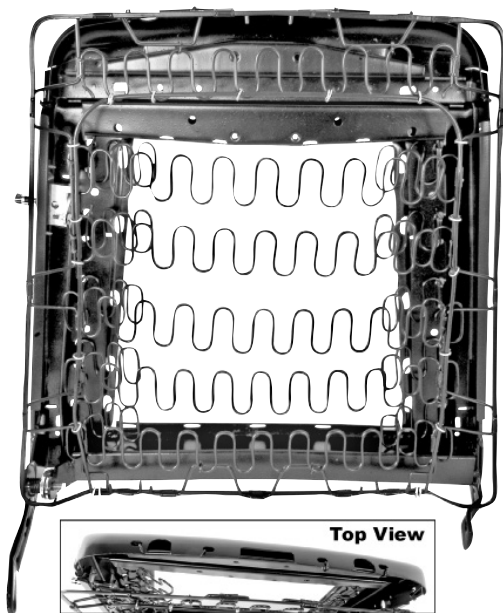


### 3641RD **NEW**

1969 Seat Back Frame w/ Headrest Mounting Holes, RH

### 3641RE **NEW**

1969 Seat Back Frame w/ Headrest Mounting Holes, LH



3641RD

### 3641RL **NEW**

1969 Headrest (No Guide or Retainer)



Under View

# MERCURY COUGAR

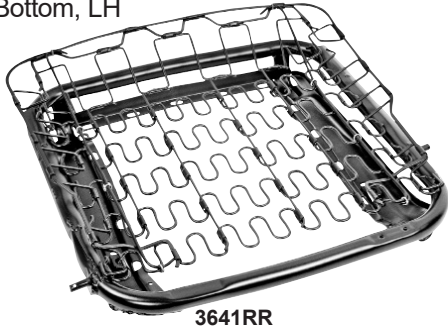
## Seats & Components

### 3641RR **NEW**

1967 Seat Bottom, RH

### 3641R **NEW**

1967 Seat Bottom, LH

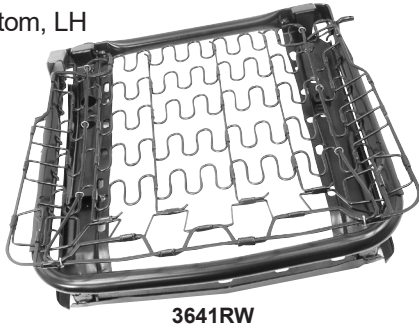


### 3641RW **NEW**

1970 Seat Bottom, RH

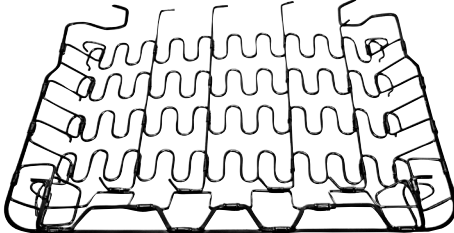
### 3641RX **NEW**

1970 Seat Bottom, LH



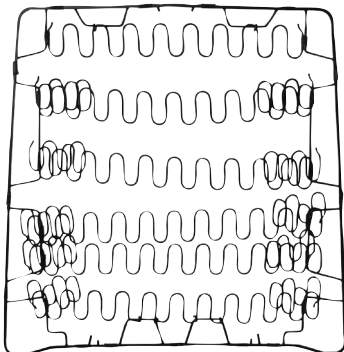
### 3641RN **NEW**

1968-70 Front Seat Bottom Spring, RH=LH



### 3641RU **NEW**

1970 Seat Bottom Spring, RH=LH

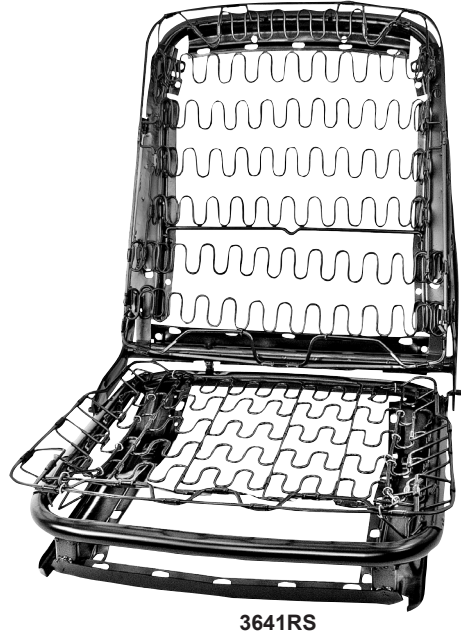


### 3641RS **NEW**

1967 Front Seat Frame Assembly, RH

### 3641RT **NEW**

1967 Front Seat Frame Assembly, LH

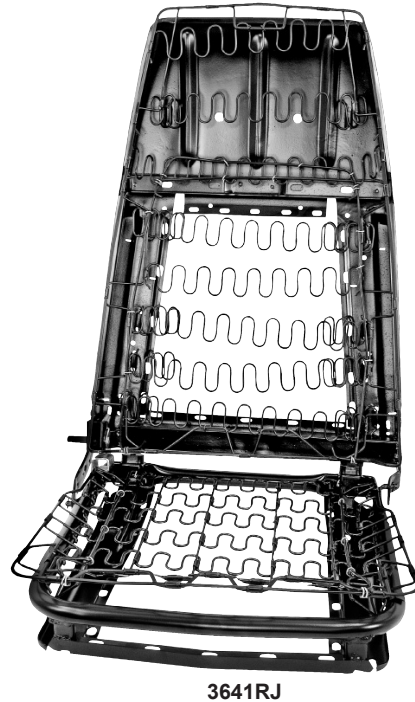


### 3641RJ **NEW**

1970 Front High-Back Seat Frame, RH

### 3641RK **NEW**

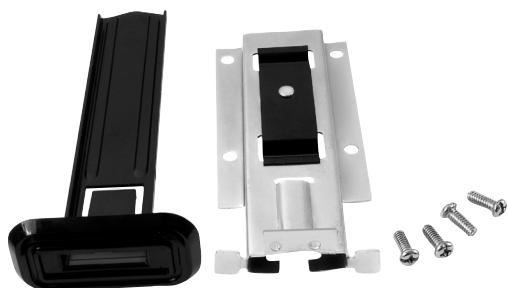
1970 Front High-Back Seat Frame, LH



## Seats & Components

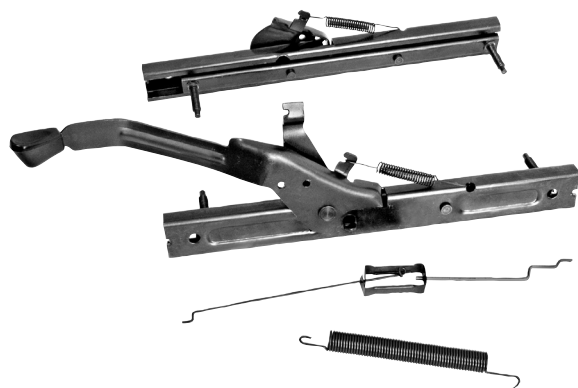
### 3641RM **NEW**

1969 Headrest Guide and Retainer (No Headrest)



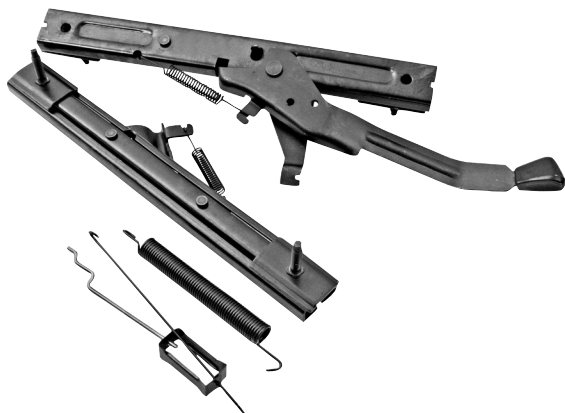
### 3641Y **NEW**

1967-68 Seat Track Assembly, RH=LH



### 3641Z **NEW**

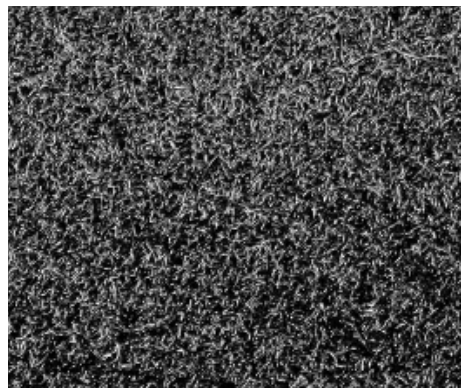
1969-70 Seat Track Assembly



### 35B53515 **NEW**

1969-70 Carpet, Black Cut Pile, (1 Pc.)  
Mustang Convertible

### Black Cut Pile Carpet



## Decals

### ML02

1967-68 "Ford" Door Sill Decal, Blue





# MERCURY COUGAR

## Interior Electrical

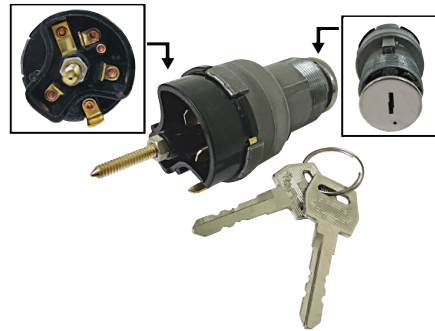
### M33900 **NEW**

1967-68, 71-73 Horn Set w/ Brackets



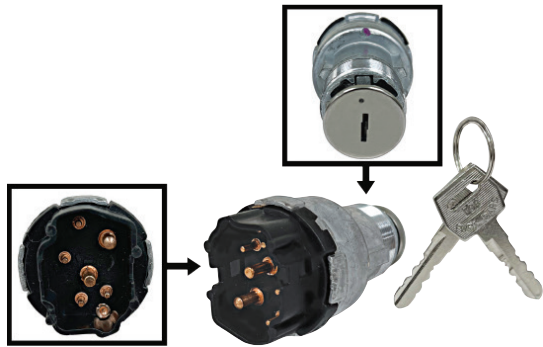
### LH75A **NEW**

1967 Ignition Switch



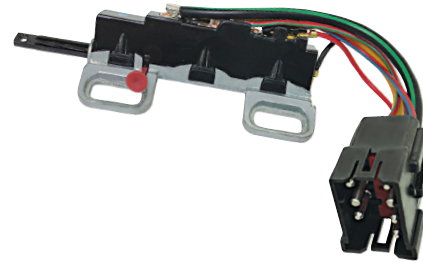
### LH75B **NEW**

1968-69 Ignition Switch w/ Large Ignition



### LH75D **NEW**

1971-72 Ignition Switch



### LH71 **NEW**

1967-68 Headlight Switch w/o Hidden Headlight



### LH75E **NEW**

1973-76 Ignition Switch

